

## Technical data sheet

### PolyFill SL-NG

#### Product description:

*Natural silica filler, specific formulation based on flour, and sands.*

PolyFill SL-NG is used in resin-bonded flooring systems based on epoxy, polyurethane or methyl methacrylate. But is specially developed for Methylmethacrylate. Mixed with the binder it achieves a self levelling compound which does not subside also under influence of higher temperatures. And achieves excellent self levelling properties.

#### Product features / benefits:

- **Excellent flow**
- **Specially developed for Methyl Meth Acrylate**
- **Low use of binder**

#### Application:

As a guideline for usage a mixing ratio of 1 part of polymer binder (MMA) can be added to 2 parts of PolyFill SL-NG (layerthickness 1-2 mm). Also this ratio can be subject of adjustment depending on the used polymer and viscosity of binder. Also to this mixture can be added additional sands like 0,4-0,8 (eventual in color) to achieve greater layer thicknesses (1,5-3 mm) without negative influence during scattering the (colored) top sands.

#### Product data:

**Colour:** *natural light-grey beige*

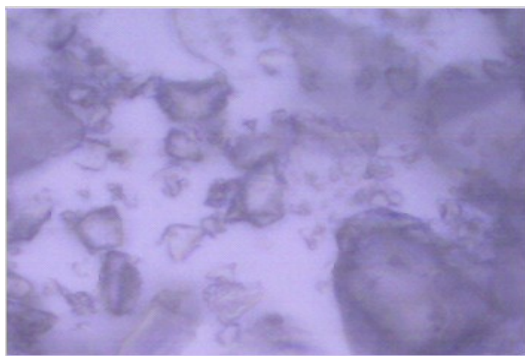
**Packing:** *25 kg ventile PE bags*

#### Technical specification

Hardness (Mohs)	: 7
Moisture	: <0,1%
Content of SiO <sub>2</sub>	: 99.1%
Density	: 2,85 g/cm <sup>3</sup>
(DIN ISO 787/10A)	
Bulk density	: 1,65t/m <sup>3</sup>
Grainsize (mm)	: 0-0,5 mm
Maximum Sieve curve deviation	: 2%



# PolyFill SL-NG



## **LIABILITY:**

*All information, guidelines and prices are based on the current, actual state. Changes can be made without prior notice. Since environmental factors are constantly changing, we cannot accept any liability in these cases. Before application you should establish whether or not our products are suitable for your desired application and will meet expected requirements. Due to the natural source of the raw materials, slight differences may appear in the colours. These differences may also appear between batches and sample materials .*

Producer: hm-ppw / Merkury Sp. z o.o.  
POLAND, 68-200 Żary, ul. Słowackiego 4  
tel. 68 363 02 50 fax. 68 363 02 53



[www.hm-ppw.eu](http://www.hm-ppw.eu) ...